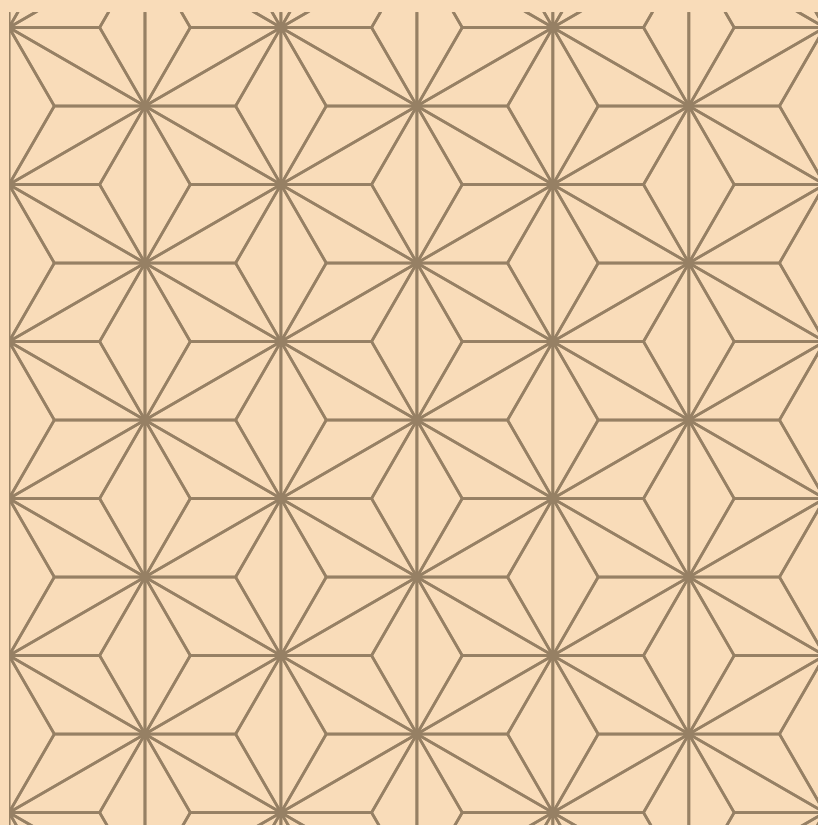


**MOTTO**<sup>®</sup>

Tiles & Bathware



**SENSA**  
SERIES



200x200mm

## SENSA SERIES

The Sensa Series brings bold expression to surfaces with its unique blend of artistry and innovation. Available in a compact 200x200mm size, it features two distinct patterns and a vibrant palette of 12 rich colors, allowing creative combinations across spaces. What truly sets it apart is the advanced Digimatt 5.0 finish, offering a soft matte texture with enhanced visual depth and durability. Ideal for modern interiors, Sensa transforms walls and floors into statement pieces that exude both charm and character.

# Mesmerizing Design Artistry For Epic Feel





Available Size | Finish  
**200x200mm** | **Digimatt 5.0**

## Blend of Heritage And Innovation

The Sensa Series is not just tilework — it's memory and modernity sealed in clay. Each 200x200mm piece whispers of cultural echoes, layered with stories from forgotten corners and hand-drawn patterns born anew. With Digimatt 5.0 finish as its soul, and twelve shades as its language, Sensa doesn't decorate your home — it sings to it. In every curve, a poem. In every pattern, a revolution disguised as design.

# Incredible Features

Our tiles are crafted for unmatched durability and performance. Boasting high load and frost resistance, they endure harsh conditions without compromising their beauty.

The easy installation process saves time, while the anti-slip finish enhances safety, making them ideal for any space. Experience the perfect blend of elegance and functionality with us.



Frost Resistance



High Load Resistance



Thermal Impact



Anti-slip Finish



Removable & Reuse



Easy to Install



Chemical Resistance



Ecological Finish



Fire Proof

# Application Areas

Ideal for both walls and floors, our tiles enhance any space with their stunning designs. Create a seamless blend of beauty and practicality in residential and commercial settings.



Wall



Floor



SMALLTILE

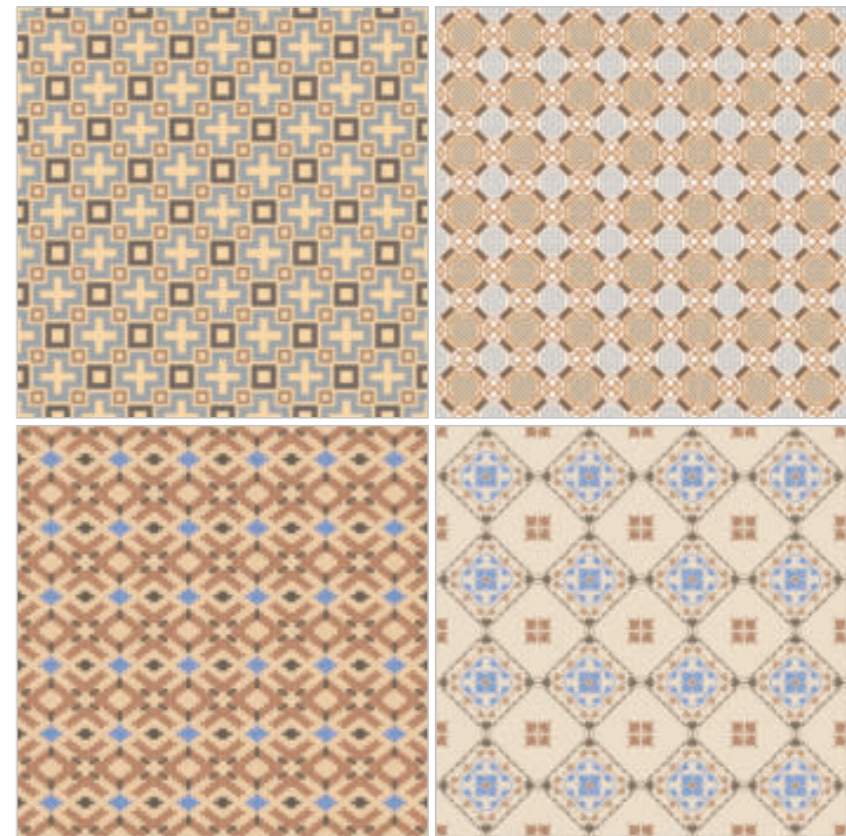


### SENSA DECOR 1

Size:  
200x200mm

Finish:  
Digimatt 5.0

360°



Italian Technology

MINIMUM 3MM  
SPACER MANDATORY







SMALLTILE

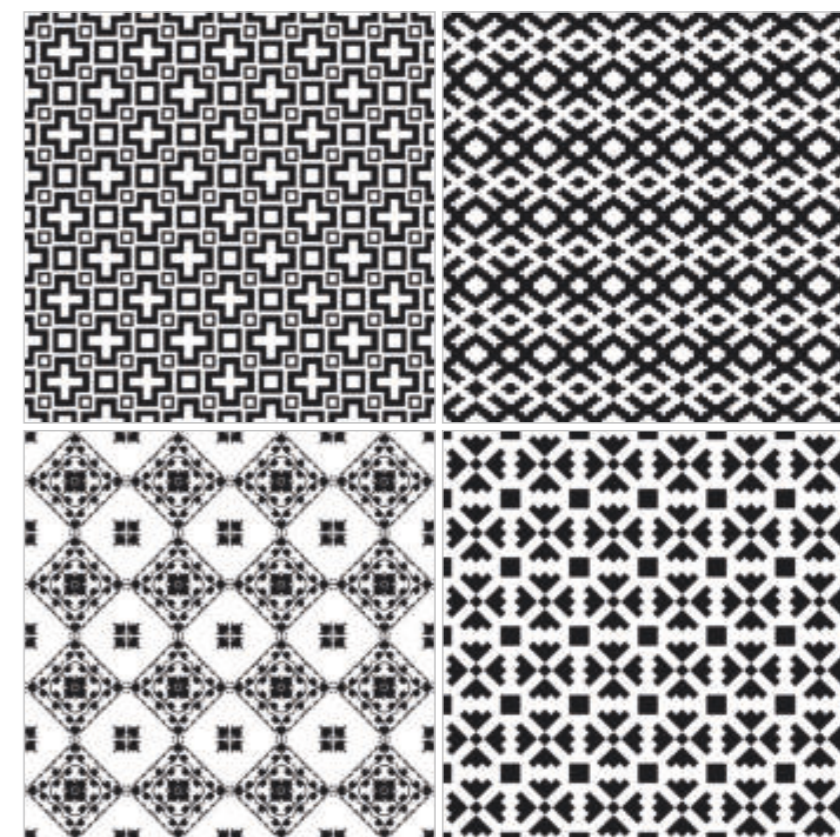


## SENSA DECOR 2

Size:  
200x200mm

Finish:  
Digimatt 5.0

360°



Italian Technology

MINIMUM 3MM  
SPACER MANDATORY





## CLEANING & MAINTENANCE

Our products are non porous (due to their high quality raw materials, stringent production parameters and state of the art technology), hence any dust or deposited waste cannot penetrate the surface.

For most cases only a damp cloth is sufficient for cleaning.

Regular cleaning highlights the aesthetic features of the surface and gives it exceptional shine.

For highly aggressive cleaning caused by some common food and substances follow the table below.

TYPE OF STAIN	CHEMICAL PRODUCT	EXAMPLE
Grease	Alkaline - Solvent	Detergent
Oil	Solvent	Ammonia, Baking Soda
Ink	Oxidant - Solvent	Alcohol, Liquid Bleach, Nail Paint Remover
Rust	Acid	Hydrochloric Acid, Vinegar, Red Harpic
Lime	Acid	Descaling Reagent, Hydro Chloric Acid
Cement	Acid	Hydro Chloric Acid
Wine	Alkaline	Ammonia, Liquid Bleach
Coffee	Alkaline - Solvent	Ammonia, Liquid Bleach
Rubber	Solvent	Alcohol, Thinner
Plaster	Acid	Hydro Chloric Acid
Candle Wax	Solvent	Alcohol, Thinner
Iodine	Oxidant	Liquid Bleach
Blood	Oxidant	Liquid Bleach
Ice Cream	Alkaline	Liquid Bleach

Note: It is recommended that any kind of stain needs to get clean immediately / as soon as possible.

## TECHNICAL SPECIFICATIONS

CHARACTERISTIC	STANDARD AS PER ISO 13006:2018 En14411 Gr.Bla	STANDARD AS PER IS 15622:2017 Gr.Bla	METHOD OF TESTING	MAIN VALUE OF MOTTO
*Un-Rectified (Which is Lower)				
<b>Regulatory Properties</b>				
Deviation in Length and Width	±0.60% (±2.0%)	±0.40%	ISO 10545-2/IS 13630-1	±0.40%
Deviation in Thickness	±5.0% (±0.50%)	±5.0%	ISO 10545-2/IS 13630-1	±5.0%
Straightness in Side	±0.50% (±1.5%)	±0.30%	ISO 10545-2/IS 13630-1	±0.30%
Rectangularity	±0.50% (±2.0%)	±0.30%	ISO 10545-2/IS 13630-1	±0.30%
Surface Flatness Central Curvature	±0.50% (±2.0%)	±0.50%	ISO 10545-2/IS 13630-1	±0.40%
Surface Flatness Edge Curvature	±0.50% (±2.0%)	±0.50%	ISO 10545-2/IS 13630-1	±0.40%
Surface Flatness Warpage	±0.50% (±2.0%)	±0.50%	ISO 10545-2/IS 13630-1	±0.40%
Surface Quality	>95% defect free	>95% defect free	ISO 10545-2/IS 13630-1	>95% defect free
Small Colour Difference (for Plain Colour)	ΔE<1.0	N.A.	ISO 10545-16	ΔE<0.30
<b>Structural Properties</b>				
Water Absorption	Ev≤0.50% Individual Max:0.6%	Ev≤0.08% Individual Max:0.1%	ISO 10545-3/IS 13630-2	Ev≤0.08% Individual Max:0.1%
Bulk Density	As per Manufacturer	Min. 2.20 gm/cc	ISO 10545-3/IS 13630-2	>2.28 gm/cc
<b>Massive Mechanical Properties</b>				
Modulus of Rupture	Min 35.0N/mm <sup>2</sup> , Individual 32n/mm <sup>2</sup> Min	Average 35.0 N/mm <sup>2</sup> , Individual 32 N/mm <sup>2</sup> Min	ISO 10545-4/IS 13630-6	Min. 40.0 N/mrn <sup>2</sup>
Breaking Strength Thickness ≥7.5mm	Min. 1300.00N	Min. 1300.0N	ISO 10545-4/IS 13630-6	Min. 1500.0N
<b>Surface Mechanical Properties</b>				
MOH'S Hardness #	As per Manufacturer	Min. 5	BS EN 1577/IS 13630-13	Min. 5
Surface Abrasion Resistance #	As per Manufacturer	Min. Class II	ISO 10545-7/IS 13630-11	Min. Class II
<b>Thermal Hygrometric Properties</b>				
Moisture Expansion	Max 0.06% (0.6 mm/m)	Max 0.02mm/m	ISO 10545-10/IS 13630-3	Nil
Thermal Expansion (COE) at 100 °C	As per Manufacturer	Max. 6x10 <sup>-6</sup> k	ISO 10545-8/IS 13630-4	Max. 6.0x10 <sup>-6</sup>
Thermal Shock Resistance	Min. 10 Cycle	Min. 10 Cycle	ISO 10545-9/IS 13630-5	Min. 10 Cycle
Impact Resistance (COR) #	As per Manufacturer	Min. 055	ISO 10545-5/IS 13630-14	Min. 055
Frost Resistance	As per Manufacturer	As per Manufacturer	ISO 10545-12/IS 13630-10	Frost Proof
Crazing Resistance at 7.5 bar	As per Manufacturer	4 Cycle	ISO 10545-11/IS 13630-9	6 Cycle
<b>Chemical Properties</b>				
Resistance to Staining Glazed	Min. Class 3	Min. Class 1	ISO 10545-14/IS 13630-7	Min. Class 4/Min. Class 1
Resistance to Household Chemicals & Swimming Pool Salts Glazed	Min. Class GB	Min. Class AA	ISO 10545-13/IS 13630-8	Min. Class GB/Min Class AA
Resistance to Low Concentrate Acid and Alkalis Glazed	As per Manufacturer	As per Manufacturer	ISO 10545-13/IS 13630-8	Min. Class GLB***/ Min. Class A***
Resistance to High Concentrate Acid and Alkalis Glazed	As per Manufacturer	As per Manufacturer	ISO 10545-13/IS 13630-8	Min. Class GHB***/ Min. Class B***
<b>Safety Properties</b>				
Skid Resistance (DCOF-WET PENDULUM) ##	As per Manufacturer	As per Manufacturer	BS 7976-2	Stain /Mat ≥P1
Lead and Cadmium Release	As per Manufacturer	NA	ISO-10545-15	Dose not yield Pb & Cd

\*\*Whichever is lower

\*\*\*Except Hydrofluoric Acid and its compound

#Tiles intended for use on floor

##For Floor Tiles, as per customer requirement

## PACKING DETAILS

SIZE	ACTUAL SIZE	TILES/BOX	COVERAGE AREA/BOX
20x20cm	200x200mm	24 pcs.	0.96 m <sup>2</sup> 10.33 ft <sup>2</sup>





# MOTTO GROUP

8-A N. H., Sartanpar Road, At. Sartanpar, Ta. Wankaner, Morbi - 363 621, Gujarat, India.  
Email: [info@mottogroup.in](mailto:info@mottogroup.in) | [www.mottogroup.in](http://www.mottogroup.in)  
Toll Free Number: 1800 123 2124 / +91 95123 80072